



Add text here

- 1
- 4
- 3



Ideally located just off the Lisburn this four bedroom high-quality residential letting is designed perfectly for family related friends, two professionals who need the extra workspace, or a family. Conveniently located to a wide range of social and recreational amenities and within walking distance to Queens University, Belfast City and Royal Victoria hospital.

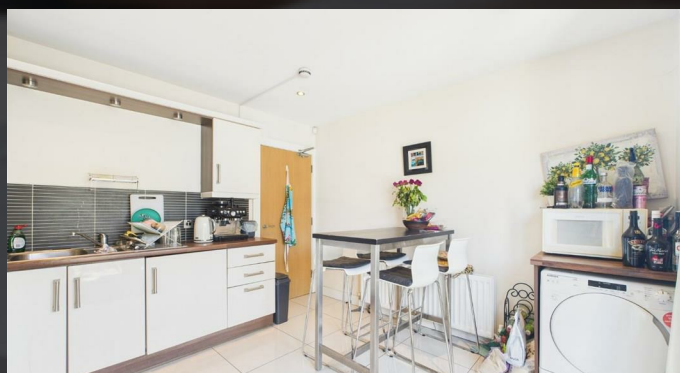
The accommodation comprises of spacious living room, a modern fitted kitchen with a breakfast bar, washer dryer, fridge freezer and a downstairs WC. On the first floor are two double bedrooms and a bathroom with a white three piece suite. The second-floor benefits from a further two double bedrooms and an en-suite shower room.

The property is further enhanced by gas fired central heating, double glazed windows throughout, an enclosed forecourt, back patio and BT connection.

A deposit and the first month's rent are payable in advance. The property is furnished and available now.

PLEASE NOTE THIS PROPERTY IS A PRIVATE HOUSE, NOT HMO

To arrange a viewing or for further information please call Michael Chandler Estate Agents on 02890 450550 or visit www.michael-chandler.co.uk



Mortgage advice is available from our in-house Mortgage Advisor, you can find out how much you can borrow within minutes!

REQUEST VALUATION

We would be delighted to visit your property and give you a Free Valuation and some helpful advice regarding the sale or rental of your property to you!

513 Ormeau Road, Belfast, BT7 3GU

02890 450 550

property@michael-chandler.co.uk

michael-chandler.co.uk

Michael
Chandler
ESTATE AGENTS