




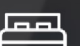

Michael 11

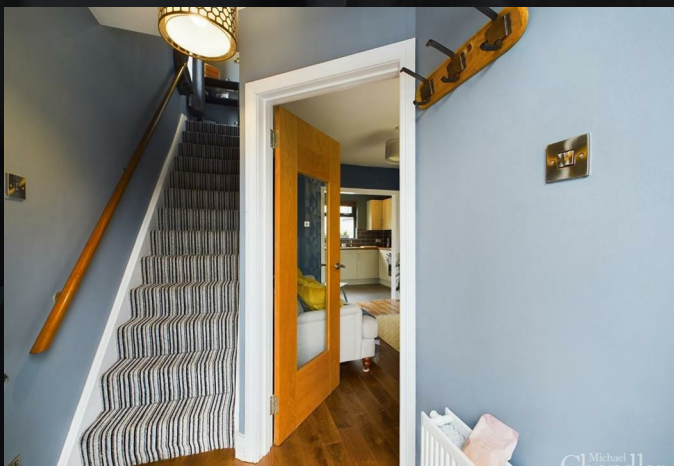
A delightful and immaculate semi-detached property in the very heart of Saintfield

Beautifully decorated and updated by the current owner

Very large rear garden offering excellent privacy and wildlife

Superb open plan kitchen and dining area with direct access to the rear patio

- 1 
- 2 
- 1 





Cosy living room with an open arch from the kitchen and an open fire

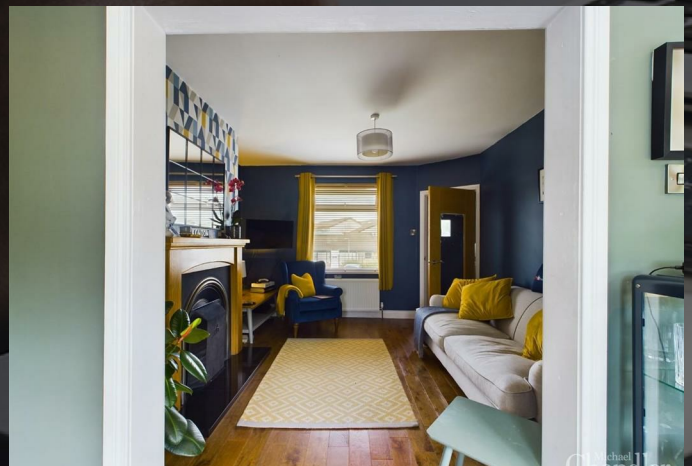
Two generous bedrooms and a modern shower room upstairs

Gas fired central heating and fully double glazed

Off-street parking available

Within easy walking distance to an amazing range of amenities and eateries

Conveniently located across the road from Saintfield High School



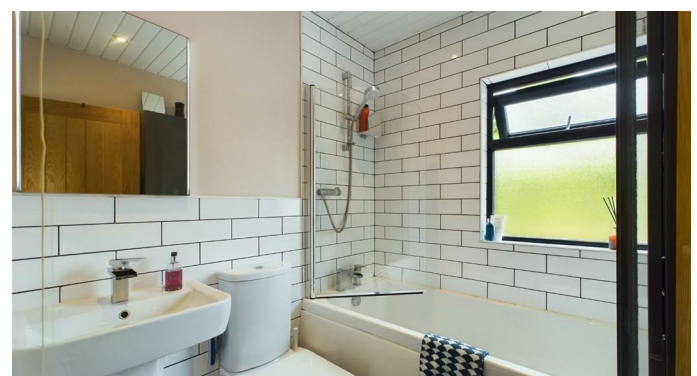
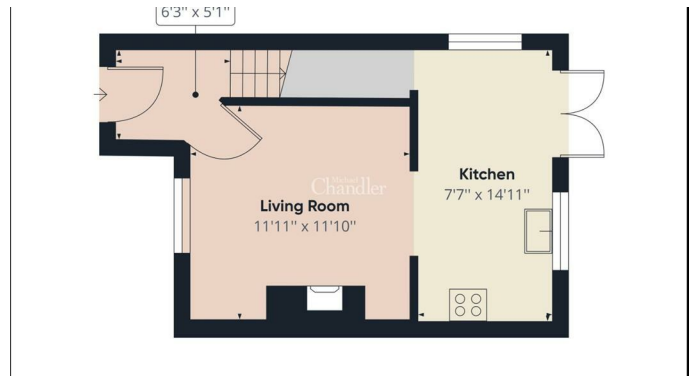
Full Marks!

Welcome to 20 Comber Road, a charming two-bedroom semi-detached property nestled in the heart of Saintfield, Co Down. This home offers a comfortable and contemporary living space, ideal for those taking their first steps onto the property ladder, those downsizing and investors alike.

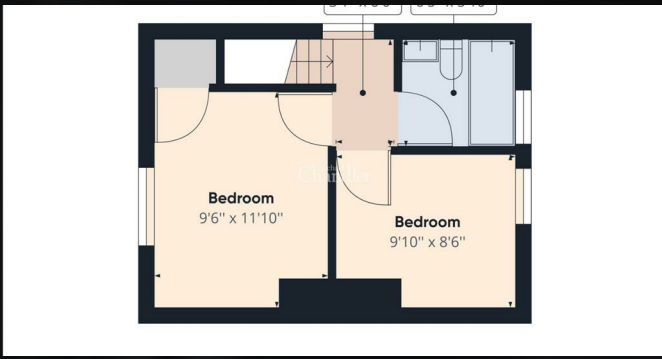
Upon entering the property, you are greeted by the stylish and well-designed interior. The ground floor features a superb open plan kitchen and dining area, perfect for entertaining guests or enjoying family meals. The kitchen boasts modern fittings and ample storage space and with direct access to the rear patio and vast garden summer BBQ's will be nothing but a pleasure. Adjacent to the kitchen is a cosy living room with an open archway enhancing the flow of natural light, creating a welcoming atmosphere throughout the ground floor. Upstairs, you will find two generous bedrooms – the master with built in wardrobes and a modern bathroom with a shower over the bath.

One of the standout features of this property is its very large rear garden offering excellent privacy, and an expansive outdoor space for children or pets to play. There is a small front garden and plenty of off-street parking, ensuring convenience and ease of access.

Location-wise, 20 Comber Road is ideally situated within walking distance to the friendly village of Saintfield where you will find a range of amenities including shops, cafes, and restaurants, allowing you to enjoy a vibrant community atmosphere. For added convenience, the property is located across the road from Saintfield High School, making it an excellent choice for families with school-age children.



Asking Price £139,950



Mortgage advice is available from our in-house Mortgage Advisor, you can find out how much you can borrow within minutes!

REQUEST VALUATION

We would be delighted to visit your property and give you a Free Valuation and some helpful advice regarding the sale or rental of your property to you!

513 Ormeau Road, Belfast, BT7 3GU

02890 450 550

property@michael-chandler.co.uk

michael-chandler.co.uk

Michael
Chandler
ESTATE AGENTS