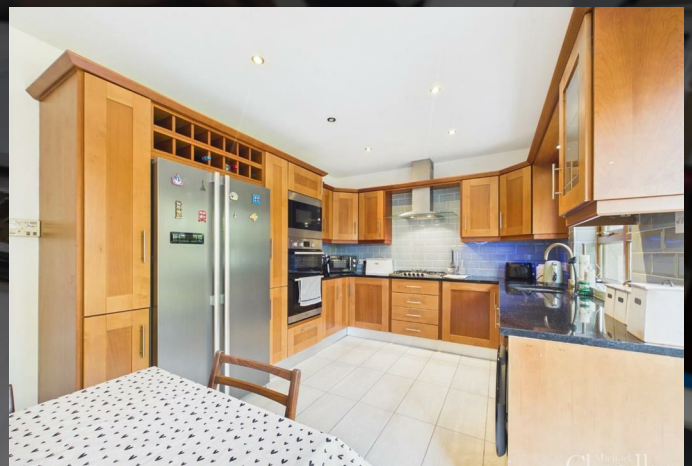
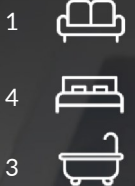




A beautifully presented four-bedroom detached home in the charming village of Saintfield  
Bright and welcoming entrance hall with under-stair WC/cloakroom  
Spacious living room with a feature fireplace and dual aspect windows  
Modern kitchen and dining area with built-in appliances and plumbing for white goods  
Double doors leading to the rear garden, ideal for indoor-outdoor living  
Versatile ground floor fourth bedroom (ideal as guest room, office, or playroom)  
Principal bedroom with built-in storage and an ensuite shower room  
Contemporary family bathroom with a four-piece suite including separate bath and shower



## A Grand Home!

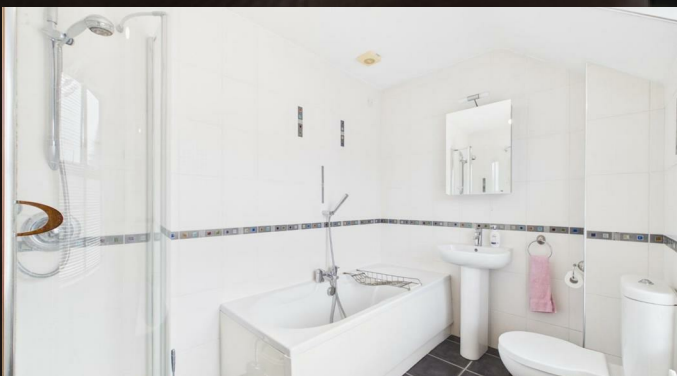
Set in the charming and popular village of Saintfield, this beautifully presented four-bedroom detached home offers a perfect blend of modern comfort, generous living space, and family-friendly design.

The property comprises a bright and welcoming entrance hall, complete with a practical under-stair WC that thoughtfully doubles as a cloakroom. The spacious living room features a striking fireplace that creates a warm focal point, while dual aspect windows flood the space with natural light throughout the day. The contemporary kitchen and dining area provides an ideal setting for both everyday living with built-in appliances and plumbing for white goods, this space is as functional as it is stylish. Double doors open seamlessly onto the rear garden, creating an effortless indoor-outdoor flow during warmer months. A versatile fourth bedroom is conveniently located on the ground floor, benefiting from dual aspect windows and offering flexibility as a guest room, home office, or playroom.

Upstairs, a generous landing area with built-in storage leads to a well-proportioned principal bedroom that enjoys the added luxury of built-in storage and a private ensuite shower room. Two further double bedrooms - one with built-in storage and a contemporary family bathroom, fitted with a four-piece suite including both a separate bath and shower complete the space.

Outside, the property continues to impress. The front garden is neatly laid in paving stones and enhanced by mature shrubs, creating an attractive and low-maintenance first impression. To the rear, the enclosed garden is laid in lawn and bordered by established shrubs, with a delightful patio area and pergola - perfect for relaxing or entertaining outdoors.

Saintfield itself is a highly desirable location, known for its welcoming community atmosphere and an excellent range of local amenities, schools and transport links to Belfast City Centre.



**Mortgage advice is available from our in-house Mortgage Advisor, you can find out how much you can borrow within minutes!**

### REQUEST VALUATION

We would be delighted to visit your property and give you a Free Valuation and some helpful advice regarding the sale or rental of your property to you!

513 Ormeau Road, Belfast, BT7 3GU

**02890 450 550**

property@michael-chandler.co.uk

michael-chandler.co.uk

Michael  
**Chandler**  
ESTATE AGENTS